

# NEWS



www.jamesriverartleague.com

## THE LIFE OF ANDREW WYETH



### Artist Challenge

There's still time to take on the 2013 JRAL Artist Challenge to produce a piece of art that speaks of Richmond. Create your work in the medium of your choice and share it with your colleagues in art at the May 17 meeting.

### "SELF-PORTRAIT — SNOW HILL" FEATURED AT MARCH MEETING

In his art, Andrew Wyeth captured the land and people around him, particularly at his home in Chadds Ford, Pa., and his summer home in Maine.

In reality, he was a very private man, preferring to let his art speak for him.

At the March 15 meeting of the James River Art League, we will get a look into his private world through "Andrew Wyeth: Self-Portrait – Snow Hill," a documentary produced by his wife, Betsy James Wyeth.



Andrew Wyeth

As he walks the hills and valleys of the Pennsylvania countryside where he grew up, he takes us on a tour of his life, supported with home movies, letters and interviews with those closest to him. We learn about his childhood, studying under his caring but

demanding father N. C. Wyeth, his friendships with his neighbors and the inspiration he drew from them.

The meeting will begin at 11 a.m., at St. Matthews Episcopal Church.



### EN PLEIN AIR

We asked JRAL members what were some of their favorite places to paint outdoors, and the answers ranged from the Japanese Garden at Maymont (above by Helen Sanders) to Lois Shipley's front porch. Go to Pages 4 and 5 for a sampling, and perhaps some inspiration.

## SEE MARY WHYTE'S "WORKING SOUTH" ON APRIL 19

"Working South," a show at the Peninsula Fine Arts Center in Newport News, reveals an intimate portrayal of the workers left

behind by progress and outsourcing: cotton pickers, wooden boat builders, textile mill workers, crabbers, shrimpers, the shoe shine man, etc.

Traveling the South for three and a half years, artist Mary Whyte, who lives in Charleston, SC, interviewed



Beekeeper's Daughter

and painted dozens of people in various industries that are quickly vanishing or dramatically changing.

The James River Art League will see "Working South" for the April 19 program. The group will travel by bus to Newport News to visit PFAC, have lunch in a nearby restaurant and return. (See box on Page 2 for details).

Whyte says she was drawn to the subject "because I think that it's a story that needs to be told. These are people living out their lives under the radar. But I think we get a truer portrait of these

(Continued on page 2)



Artist Mary Whyte





Lois Shipley

## FROM THE PRESIDENT

Most of us have pretty full lives, so we often resist taking on another commitment such as serving on a committee or an executive board. That was my initial reaction but I am so glad I surrendered! It has been a rewarding confidence booster for me, both on a personal and artistic level, and a pleasure getting to know the members.

It's pretty impressive that JRAL members have been sharing goals since 1964. At the March 15<sup>th</sup> meeting, a 50<sup>th</sup> Anniversary ad hoc committee will be formed. The committee will begin to decide how to commemorate this special occasion.

As President, I have received a few phone calls

*(Continued on page 7)*

## MARY WHYTE'S "WORKING SOUTH"

*(Continued from page 1)*

characters when they go about their lives unseen.

She has taken the unseen and given them a face we cannot easily forget.

The exhibition includes 30 major watercolors, 20 accompanying watercolor studies, and a selection of the artist's sketchbooks. Among the Virginians represented are a tobacco farmer, an oyster shucker and a crab picker.

Whyte was born in Ohio in 1953, and graduated from Tyler School of Art in Philadelphia with a fine arts degree and a teaching certificate. The watercolor-artist has done workshops across the country, is an author of instructional books and articles, and has illustrated several children's books.

PFAC, an affiliate of the Virginia Museum of Fine Arts, celebrated its 50th anniversary last year.



**The Spinner**

### April Field Trip

Mary Whyte's "Working South"

Peninsula Fine Arts Center,  
Newport News, VA

Friday, April 19

Meet at 8:15 a.m., Crossroads Art Center

Depart at 8:30 a.m.

Visit Peninsula Fine Arts Center  
Lunch at Al Fresco Italian restaurant

Return at 3:30 p.m.

Cost: \$54 (Includes bus fare, museum, lunch)

Sign up with Janice Clark  
twinandjan@aol.com or 804 921-7335

Send checks to Treasurer Maryanne Evans to  
confirm your reservation

Deadline for registration and confirmation:  
April 5

## PROGRAM SCHEDULE



Date	Type	Details
11 a.m. March 15	Meeting Program Video Presentation	Watch "Snow Hill," a self-portrait of Andrew Wyeth, one of our greatest American painters. This film incorporates his great works of art along with home movies of N.C. Wyeth
8:15 a.m. April 19	Out-of-town Field Trip	Travel to Newport News to see "Working South," a special exhibit of paintings by nationally recognized watercolorist Mary Whyte, at the Peninsula Fine Arts Center in Newport News. Afterward enjoy lunch at Al Fresco Italian
11 a.m. May 17	Annual Meeting	Share results and enjoy critiques of work from the annual Member Challenge. Outer dimensions of artwork and frame: 20"x24"

Programs and schedule are subject to change. For updates, visit the website: [www.jamesriverartleague.com](http://www.jamesriverartleague.com)



# NEWS, NOTES FOR AND ABOUT JRAL ARTISTS

## Awards and Honors

Seven members of the James River Art League won awards in For Art's Sake Annual Adult Juried Student Art Show:

Drawing/Mixed — first place, **Elizabeth Hood**; third place, **Rosemary McKnight**;

Acrylic — second place, **Shirley Harrington**, third place, **Collin Hoskins**;

Oil — second place, **Janice Clark**;

Watercolor — second place, **Susie Counts**;

Peer Choice Award — **Anne Negus**.

## Shows

**Danielle Ashbridge** is having a show at Capital One called "Make Me Smile" which features 12 of her pieces. The show runs through spring and summer.

Several of **Betty Eddowes'** paintings are being featured in the window of the Studio in Kilmarnock, the gallery of the Rappahannock Art League.

## Open Show

Uptown Gallery is having an open, judged show in the Loft Gallery in April and May.

The theme is "How does your garden grow?" Prizes will be awarded.

Cost of participation is \$10 each for the first and second pieces and \$5 for each additional entry thereafter. The judge has not yet been selected.

The drop off date is March 30 and the pick up date is May 25.

For more information and details about registering, contact **Rosemary McKnight**.

## Recent Sales

**Lois Shipley** sold two paintings in February.

At Crossroads Art Center: **Sally Booth** sold two paintings, a print and several card sets, and **Betty Eddowes** sold three paintings.

And at the recent JRAL exhibition at Crossroads, **Arlene DeConti**, **Barbara Evans** and **Dan Michael** sold paintings.



## Restoring the Hoffbauer Murals

For the February field trip, JRAL members went to the Virginia Historical Society to see the restoration in progress of Charles Hoffbauer's eight-panel murals depicting "The Four Seasons of the Confederacy." Conservator Cleo Mullins (at right in the middle photo) led the tour.



# WORKSHOPS AT FOR ART'S SAKE

## "Paint Your ART Out"

with Elizabeth Eubanks  
Formerly "Wine and Design"

6:30-9 p.m., Tuesday, March 12

You don't have to be an artist to participate. The instructor will help you step by step to create your painting. Just bring a bottle of wine (FAS will provide the canvas, paint and brushes) and leave with your own original acrylic painting. This workshop is for beginners to advanced painters. Great for girl's night out!

Cost: \$65, supplies included

## "Painting From (Still) Life"

with Christopher Wynn

10 a.m.—4 p.m., Saturday, April 13

Enjoy a live demo (in watercolor) while painting alongside the instructor. Any and all mediums are welcome, as well as all skill levels. We will be working to capture the natural beauty of two different set-ups: one will be a floral, and another a still-life with various objects. The instructor will discuss setting up a still-life, lighting it for dramatic effect, and drawing and painting techniques.

Cost: \$90

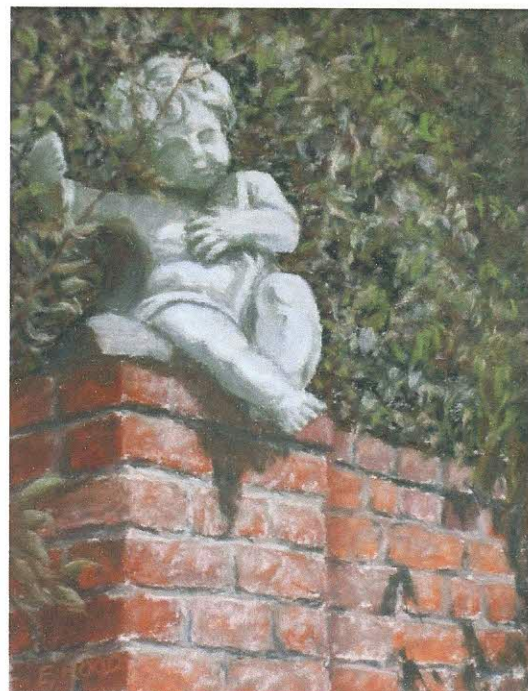


## FAVORITE PLACES TO PAINT *EN PLEIN AIR*



This painting was done at Maymont, one of my favorite places to paint *plein air*. I was drawn to this particular scene because of the way the line of the building and the trees seemed to draw my eye to the colorful flowers in full bloom. I started the painting using a *terra rosa* underpainting, then added color once I had my shapes and values the way I wanted them. After a couple of hours, the light was beginning to change and I had not yet come to the degree of finish that I like. In order to keep the color and freshness of the painting, I packed up and returned again in a couple of days to the same spot at the same time of day to add a few finishing touches.

— Mary Pedini

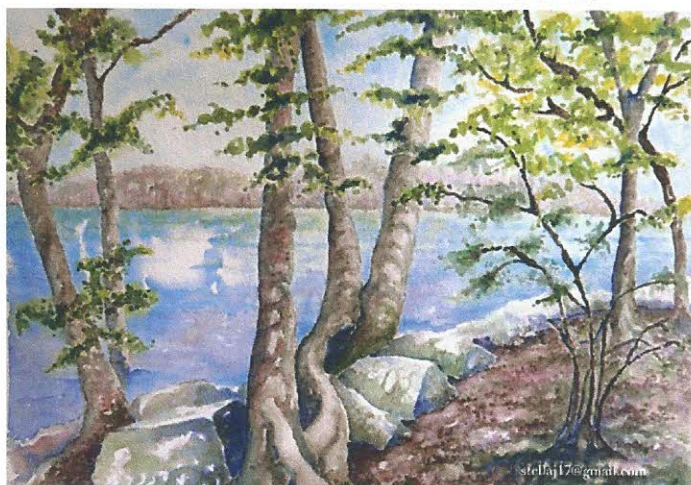


▲ This is from the garden at Virginia House, next to Agecroft Hall in Windsor Farms. The title is "Garden Cherub" and it's a favorite of mine — it's a fairly early work and it hangs in my bedroom right where I can see it every night and morning.

— Elizabeth Hood

The Pony Pasture is one of everyone's favorite "let's go paint at the James River" sites. "Along the James" was inspired by a visit there for one of Ann Chenoweth's classes.

— Stella Jones ▼





## PRÉFÉRÉS LIEUX POUR PEINDRE OUTDOORS



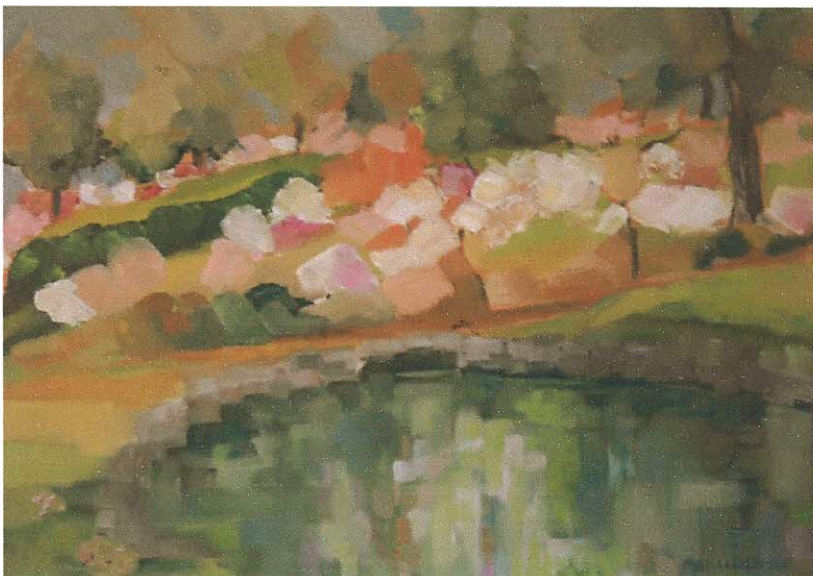
▲ I painted "Bamboo Hollow" from my front porch. I had this idea once that my paintings should be of exotic places, but I've come to appreciate the scenes outside my own home. It seems to be all about the light and the seasonal colors, though. One day a view captures my attention, and the next day, not so much.

— Lois Shipley



▲ For me, the Canal Walk offers an interesting variety of organic and geometric elements to design with. I also like the challenge of trying to simplify all the complexities an urban environment presents.

— Dan Michael



▲ "Azalea Row" was painted last spring at Byran Park, an often overlooked painting site. It is particularly beautiful when the Azaleas are in bloom.

— Marla Coleman



▲ And then there's Lewis Ginter Botanical Gardens - always a treat regardless of the season or where you are in the garden.

— Suzanne Spooner-Munch



# TIME TO STEP UP FOR JRAL

It's time again for the biennial restructuring of the leadership of the James River Art League, as we select new officers and reorganize the standing committees.

The president, Lois Shipley, has appointed Gigi Vranian chairman of the nominating committee. League members at the March meeting will select two other members of the three-person committee. Shipley is an *ex officio* member.

The nominating committee solicits recommendations for officers and committee chairmen during March and April and prepares a slate of officers to be considered by the membership at the annual business meeting in May.

Once elected, the incoming president appoints chairmen of the various committees.

The JRAL Bylaws (available on the website) define the positions and responsibilities of the officers and committee chairs, who collectively constitute the Executive Board. Here's a summary:

**The president** presides at all meetings, appoints all committee chairs, has general supervision of all League affairs, and is an *ex-officio* member of all committees. The president also can call special meetings, appoint special committees, arrange for audits of the JRAL financial books, and sign checks when the treasurer is unable to do so.

**The First Vice President**, in the absence of the president, performs all presidential duties. The vice president also serves as Chair of the Program Committee.

**The Second Vice President** serves as Parliamentarian.

**The Secretary's** responsibilities include: keeping records of all board and membership meetings and maintaining custody of official League records

**The Treasurer** prepares and monitors an annual budget approved by the Board, manages all money of the League, collects all dues and fees and notifies members of dues that are payable. The Treasurer pays all authorized bills, keeps the League's financial records and submits financial reports to the board and members, maintains information for government and banking documents and does whatever reporting that is required.

The standing committees are: Program, Membership, Exhibit, Gallery, Hospitality, Publicity, Communication, Newsletter, Archives, and Community Outreach

The chairs of these committees are appointed for two-year terms by the President, except for the Program Chair whose duties are performed by the First Vice President. All Standing Committee Chairs are members of the Executive Board. The chair of each Standing Committee may appoint as many members, sub-committee chairs or co-chairs as are neces-

sary for the committee's efficient functioning.

**The Program Committee** plans and manages programs for the year, making all arrangements for carrying them out.

**The Membership Committee** is the liaison between proposed new members and the Executive Board. The Chair notifies new members of their acceptance, communicates with members regarding possible and definite status change, such as failure to follow league rules on payment of dues or exhibit requirements, etc. The committee also creates and maintains membership rosters.

**The Exhibit Committee** arranges exhibits for the membership, providing schedules and details to members. The Chair is the liaison between the exhibition venues, the Board and the members

**The Gallery Committee** develops rules for exhibiting, oversees hanging the exhibits and checking exhibitors in and out, and develops rules and procedures

**The Hospitality Committee** provides or arranges refreshments at membership meetings and art shows and assists the Program Committee as needed.

**The Publicity Committee** provides publicity and public relations for the League and its activities. This includes such things as public notices, advertising, signs and articles.

**The Communications Committee** manages or coordinates communication with both the public and members, except that which is a function of specific officers and committees. Responsibilities include sending cards and notes to members on special occasions. The committee uses all appropriate methods such as telephone, email, and letters; and creates and maintains an Internet web site and other social media and electronic communication services.

**The Newsletter Committee** produces a newsletter that is distributed to members and others. The Newsletter Committee works closely with the Communications Committee and the Board.

**The Archivist** collects, records and preserves an historical account of significant League events and activities and compiles them into an archive. The Archivist is also responsible for preserving and protecting existing historical records.

**The Outreach Committee** is a new committee that will further the mission of the League by developing ways to contribute to the community through such activities as volunteer work, service projects, donations, and support of art related organizations and endeavors.

The President or the board may appoint short-term committees to serve a specific purpose, as needed. Chairs of these committees are members of the Executive Board during their time in that position.



# EXHIBIT SCHEDULE



## Location

## About This Exhibit

## Important Dates and Info

### WINTER / SPRING

**St. Giles  
Presbyterian Church**  
5200 Grove Ave.  
Richmond, VA  
2012 Artist Challenge  
Pictures

March 7–April 29  
No commission  
25 artists, 1 painting each  
Maximum Size Restrictions:  
35" W x 21"H

Drop off: 9-9:30 a.m., March 7  
Pick up: 9-9:30 a.m., April 29  
No reception  
No prices on cards

**For Art's Sake  
Gallery**

8538 Patterson Ave.  
Henrico, VA

March 4–April 30  
30% commission  
20 artists, 2 paintings each  
Maximum Size Restrictions:  
32" x 32"

Drop off: 10-10:30 a.m., March 4  
Pick up: 10-10:30 a.m., April 30  
Reception: 5-8 p.m., March 22  
All paintings must be for sale.

**Our Lady of Hope Ctr**  
13700 N. Gayton Rd.  
Richmond, VA

May 4–30  
No Commission  
20-23 Artists / 2 paintings each

Drop off: 9:30–10 a.m., May 4  
Pick up: 9:30-10 a.m., May 30  
Reception: 6-8 p.m., May 7

### SPRING / SUMMER

**CAPITAL ONE West  
Creek**  
15000 Capital One Dr.  
Richmond, VA

May 3–Aug. 30  
No commission  
40 artists, 1 painting each  
Max: W=32"/H=32"  
All paintings POR or NFS

Drop off: 2-2:30 p.m., May 3  
Pick up: 4-4:30 p.m., Aug 30  
Not open to public  
Guests may call 804 284-6015  
to visit exhibit

**James Center Atrium**  
1015 E. Cary St.  
Richmond, VA

June 1–22  
Annual Judged Exhibit  
65 Paintings—1 per artist  
No commission  
Max: W=34"/H=37"

Drop off: 9:30-10 a.m., June 1  
Pick up: 9:30-10 a.m., June 22  
Reception: 2-4 p.m., June 9

### FALL / WINTER

**Suntrust Bank**  
919 E. Main St.  
Richmond, VA

Sept. 3-30  
No commission  
30 Artists / 1-2 paintings  
No commission  
Note: No prices on tags

Drop off: 9:30-10 a.m., Sept. 3  
Pick up: 9:30-10 a.m., Sept. 30  
No reception

**Montpelier Center**  
17205 Mountain Road  
Montpelier, VA

Oct. 1-29  
30% commission  
75-80 paintings  
Max: W=36"/H=36"

Drop off: 9:30-10 a.m., Oct. 1  
Pick up: 9:30-10 a.m., Oct. 30  
Reception: 2-4 p.m., Oct. 6

**Tuckahoe Library**  
1901 Starling Dr.  
Henrico, VA

Dec. 2-30  
No commission  
30 artists, 1-2 paintings  
Maximum 60 paintings

Drop off: 1-1:30 p.m., Nov. 30  
Pick up: 9:30-10 a.m., Dec. 30  
No reception

Diana Robinson, Gallery Co-Chair: 741-5550 (H), 512-9389 (C); dnr36@comcast.net  
Kate Towler, Gallery Co-Chair: 565-2606 (H), 432-4188 (C); katetowler@verizon.net  
Gigi Vranian, Exhibit Chair: 784-8087 (H), 337-3720 (C); vraniangigi@comcast.net

**NOTES:** Sign-up is a must for all exhibits. Please call Gigi if you sign up but can't make it. Schedule is subject to change. Please visit the website,

[www.jamesriverartleague.com](http://www.jamesriverartleague.com), for most current information.

Receptions: Food provided by exhibit participants, unless otherwise notified by the Hospitality Committee.

Entries in the Fall/Winter shows will be credited to the 2013-14 exhibit year.

## UPGRADES TO JRAL SITE

The James River Art League website has launched several new features to provide more information and to make that information easier to find and use.

There is now historical information going all the way back to the League's origins in 1964. Stella Jones, JRAL Archivist, has created digital images of 49 years of historical information and we've selected some of the highlights to share on our website.

You'll find it on the Members Only page of: [www.jamesriverartleague.com](http://www.jamesriverartleague.com)

We also have a new search feature, located at the bottom of each page. You can quickly find the information you need using the search function.

## FROM THE PRESIDENT

*(Continued from page 2)*

from people who knew a past member or came across paintings by an old member. They contributed some information about that member, but mostly questions. Although the League has kept pretty good membership lists over the years, there's still a mystery about who they all really were. It would be nice to know more of each member's personal story. To mark our 50<sup>th</sup> anniversary celebration, YOU are invited to contribute your brief biography to our archives. Please send it to Stella Jones..

In two months, we will elect new board members and appointing new committees. Gigi Vranian, as Chair of the Nominating Committee, will be emailing or mailing (to those without internet access) a list of positions where you can help JRAL. Please express your interests by completing the form and returning it to Gigi at the March 15<sup>th</sup> meeting or before April 1<sup>st</sup>. Feel free to contact any member of the executive board or committee chair to find out more. If you are new to JRAL, this is an ideal way to get to know other members. If you are an older member, you have stories to tell!





## James River Art League

**Lois Shipley**  
President

**Janice Clark**  
1st Vice President  
Program Chairman

**Collin Hoskins**  
2nd Vice President  
Parliamentarian

**Jane Cox**  
Recording Secretary

**Sally Booth**  
Corresponding Secretary

**Maryanne Evans**  
Treasurer

### Committee Chairs

**Elizabeth Hood**  
Membership

**Suzanne Spooner-Munch**  
Publicity

**Diana Robinson**  
**Kate Towler**  
Gallery

**Gigi Vranian**  
Exhibit / Contact

**Stella Jones**  
Historian / Archivist

**Lisa Nye**  
**Pam Roach**  
Hospitality

**Sandy Bruton**  
Telephone

**Mike Steele**  
Newsletter

**Our Mission:**  
To encourage the creation and  
appreciation of good art.

## JRAL WELCOMES 6 NEW MEMBERS

The James River Art League Executive Board accepted six new artists into membership at the March 1 meeting.

They are:

**Harriet Vincent**, who has studied at The Virginia Museum of Fine Arts, For Art's Sake and the Visual Arts Center. She specializes in watercolor and acrylic.

**Janine Orr**, an oil painter, holds a BFA in drawing and printmaking, and has been a graphic designer and illustrator.

**Nancy Rogers**, a watercolor artist, studies with Susan Stuller at Crossroads Art Center.



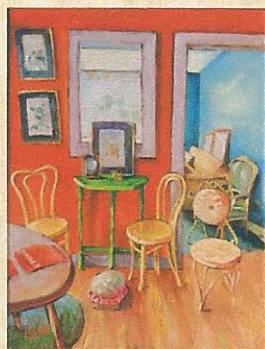
New members (from left) are Harriet Vincent, Janine Orr, Nancy Rogers, Jane Bodnar, Bev Bley and Carol Baron.

**Jane Bodnar** has done illustrations for numerous children's magazines. Her preferred mediums are pastels, pen and ink, watercolor and color pencils.

**Bev Bley** has studied at VMFA, For Art's Sake and The Torpedo Factory, and participated in workshops in

Europe, Central America and the US. She is a member of Virginia Plein Air Painters.

**Carol Baron**, who has enjoyed art her entire life, helped found a pottery group in the 1970's and now studies at For Art's Sake. She works in acrylic.



Green Table by Lois Shipley

## For Art's Sake Gallery

8538 Patterson Ave. Henrico, VA

**March 4 - April 30**

Reception: 5-8 p.m., March 22

## St. Giles Presbyterian Church

5200 Grove Ave., Richmond, VA

**March 7 - April 29**



Henri Matisse, Goldfish 1911  
watercolor interpretation by Sally Booth

